




SAMPSON COUNTY
911 & ES
FACILITIES

CLINTON,
NORTH CAROLINA

CONSTRUCTION
DOCUMENTS

ENLARGED PLANS
- ELECTRICAL

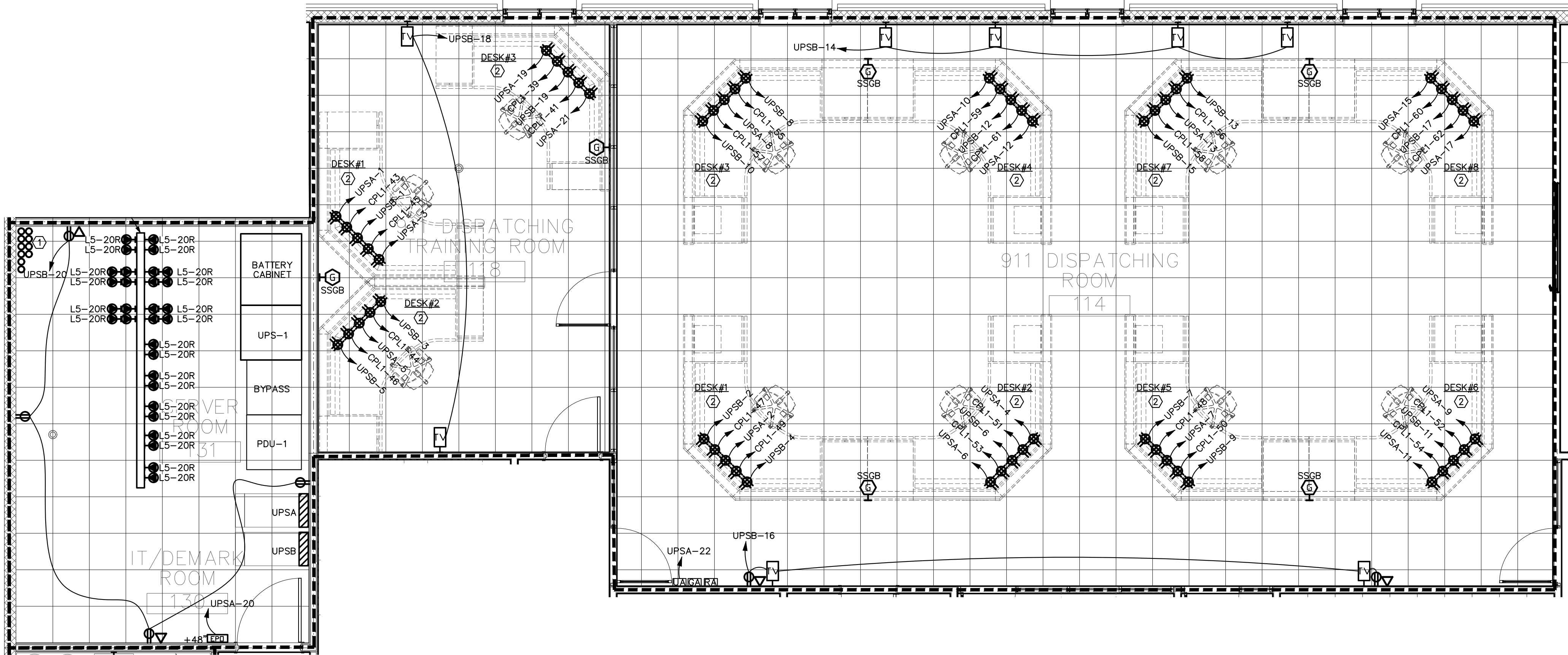
DATE	12.04.2020	
PROJECT NO	20003	
REVISIONS		
NUM.	DATE	DESCRIPTION:
	12-17-2020	REVISION #1

THIS DRAWING IS THE PROPERTY OF ADW ARCHITECTS, P.A., AND SHALL NOT BE REPRODUCED OR COPIED IN WHOLE OR IN PART. IT SHALL NOT BE USED ON ANY OTHER PROJECT OR GIVEN TO ANY OTHER COMPANY OR AGENCY WITHOUT THE CONSENT OF ADW ARCHITECTS, P.A.



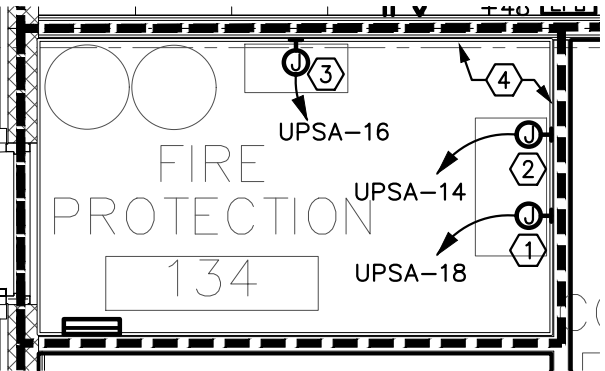
SEAL

SHEET NUMBER
E501



KEYED NOTES ① ENLARGED PLAN - 911 CENTER
(APPLY TO THIS VIEW ONLY) 1/4" = 1'-0"

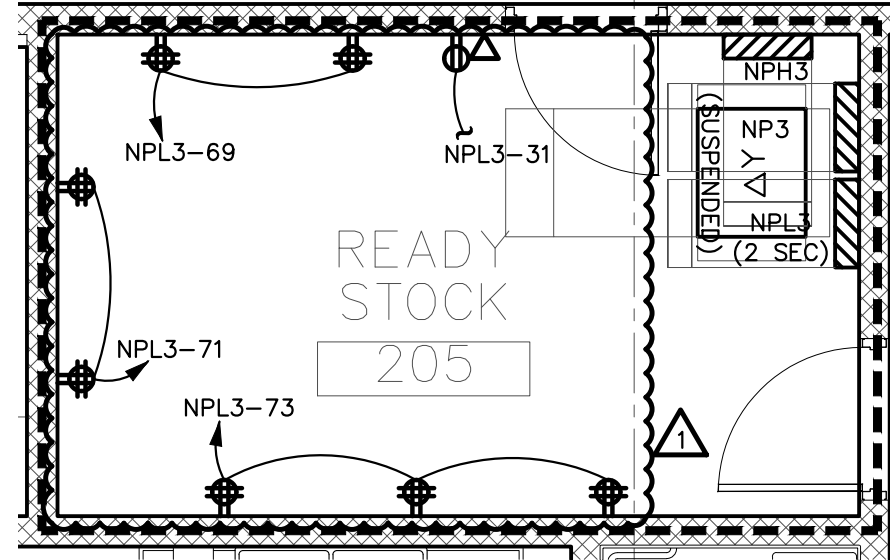
- ① CONDUIT STUB UP LOCATION. SEE SHEET E010 FOR ADDITIONAL INFORMATION.
- ② AT EACH DESK LOCATION, PROVIDE (2) RAISED FLOOR FURNITURE FEED FLOOR BOXES (SEE DETAIL #5/E603 FOR SPECIFICATION) FOR HARDWIRED FURNITURE POWER AND DATA CONNECTIONS. (1) BOX SHALL BE FOR CRITICAL POWER CIRCUITS, AND (1) FLOOR BOX SHALL BE FOR UPS CIRCUITS. VERIFY EXACT LOCATIONS AND REQUIREMENTS WITH FURNITURE VENDOR PRIOR TO ROUGH-IN.



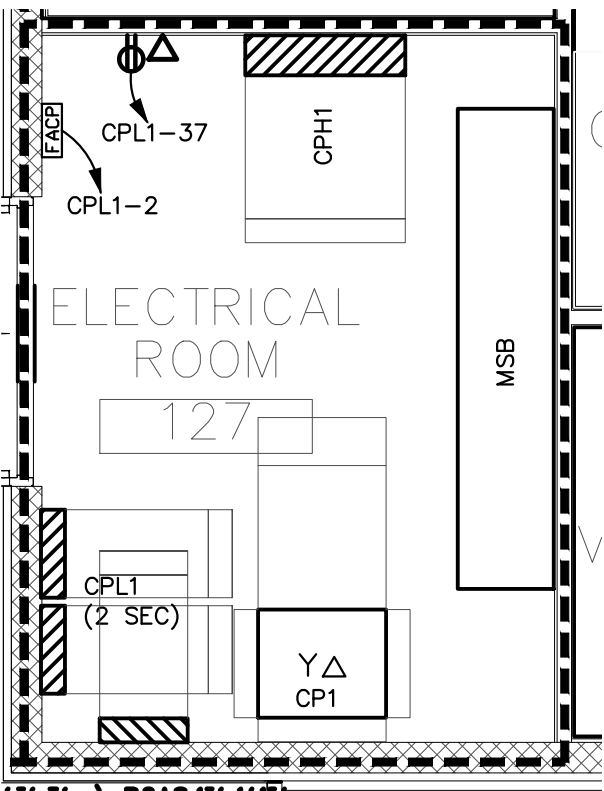
② ENLARGED PLAN - FIRE PROTECTION 134
1/4" = 1'-0"

KEYED NOTES ③
(APPLY TO THIS VIEW ONLY)

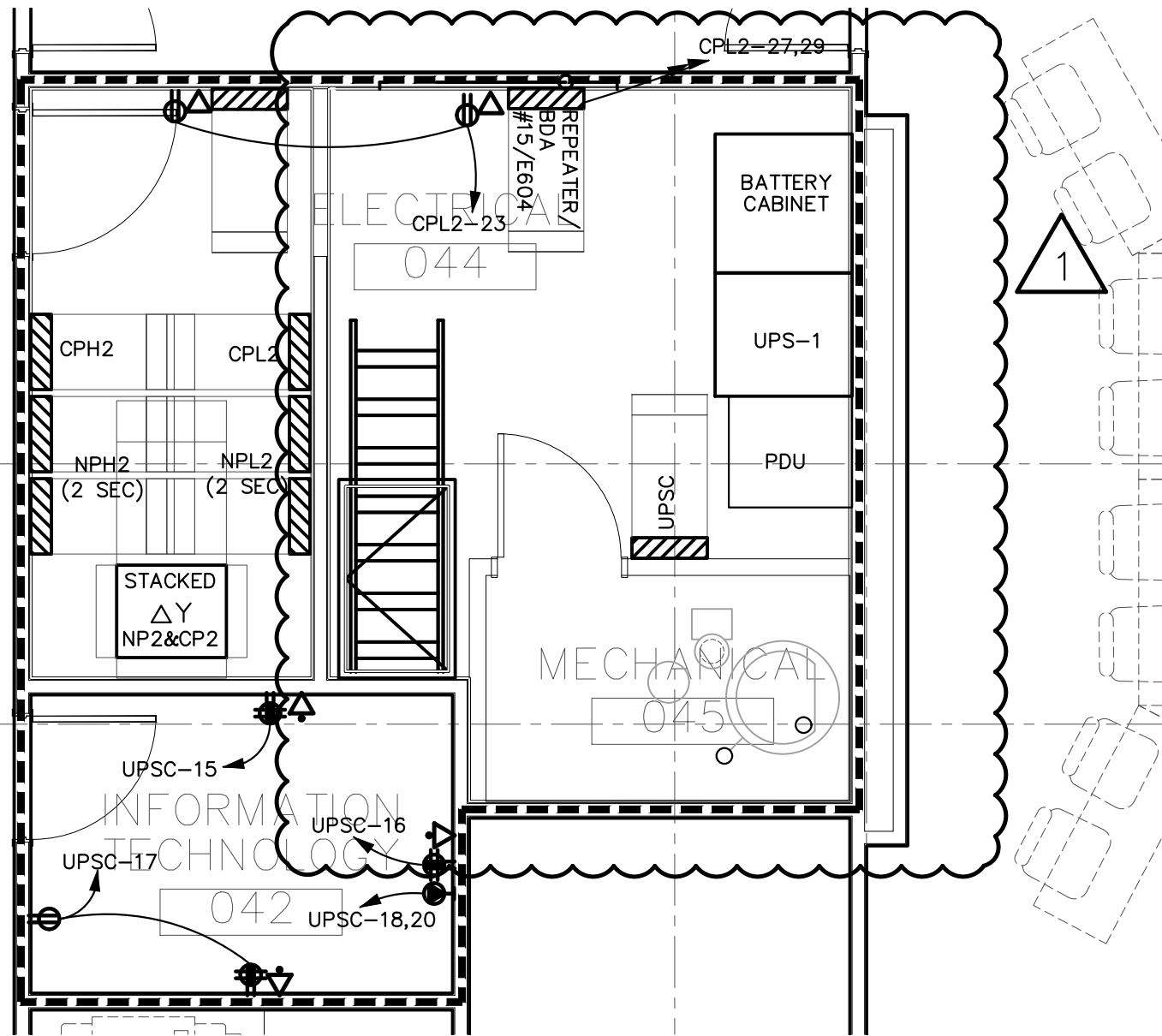
- ① PROVIDE WALL MOUNTED JUNCTION BOX FOR CONNECTION TO PRE-ACTION CONTROL PANEL. COORDINATE EXACT LOCATION PRIOR TO ROUGH-IN WITH FIRE PROTECTION SUB-CONTRACTOR. CONTRACTOR SHALL PROVIDE NECESSARY CONNECTIONS BACK TO BMS CONTROL PANEL.
- ② PROVIDE WALL MOUNTED JUNCTION BOX FOR CONNECTION TO PRE-ACTION AIR COMPRESSOR (120V/1/2, 1HP MAX). COORDINATE EXACT LOCATION PRIOR TO ROUGH-IN WITH FIRE PROTECTION SUB-CONTRACTOR.
- ③ PROVIDE WALL MOUNTED JUNCTION BOX FOR CONNECTION TO CLEAN AGENT CONTROL PANEL. COORDINATE EXACT LOCATION PRIOR TO ROUGH-IN WITH FIRE PROTECTION SUB-CONTRACTOR. CONTRACTOR SHALL PROVIDE NECESSARY CONNECTIONS BACK TO BMS CONTROL PANEL.
- ④ ALL CONTROL PANELS AND EQUIPMENT ON THIS WALL SHALL BE MOUNTED ON UNISTRUT.



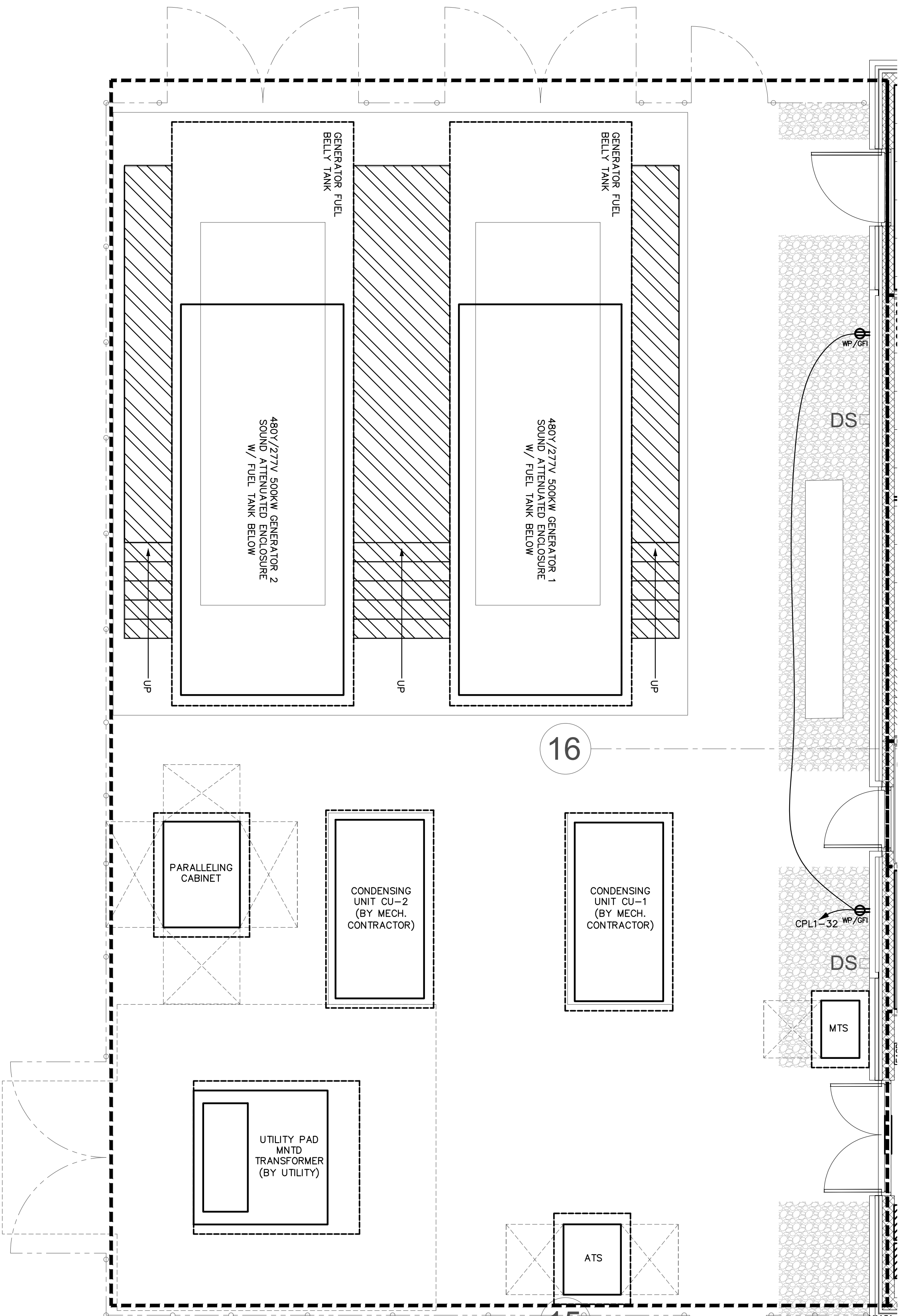
③ ENLARGED PLAN - READY STOCK 205
1/4" = 1'-0"



④ ENLARGED PLAN - ELECTRICAL ROOM 127
1/4" = 1'-0"



⑥ ENLARGED PLAN - IT 042 & ELECTRICAL 044
1/4" = 1'-0"



⑤ ENLARGED PLAN - EQUIPMENT YARD
1/4" = 1'-0"